

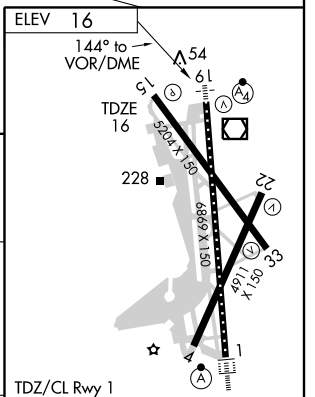
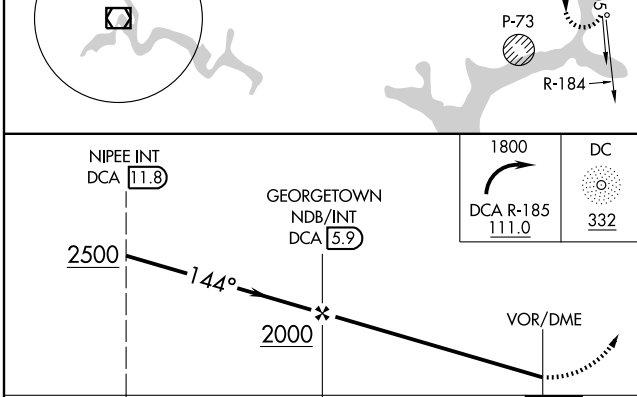
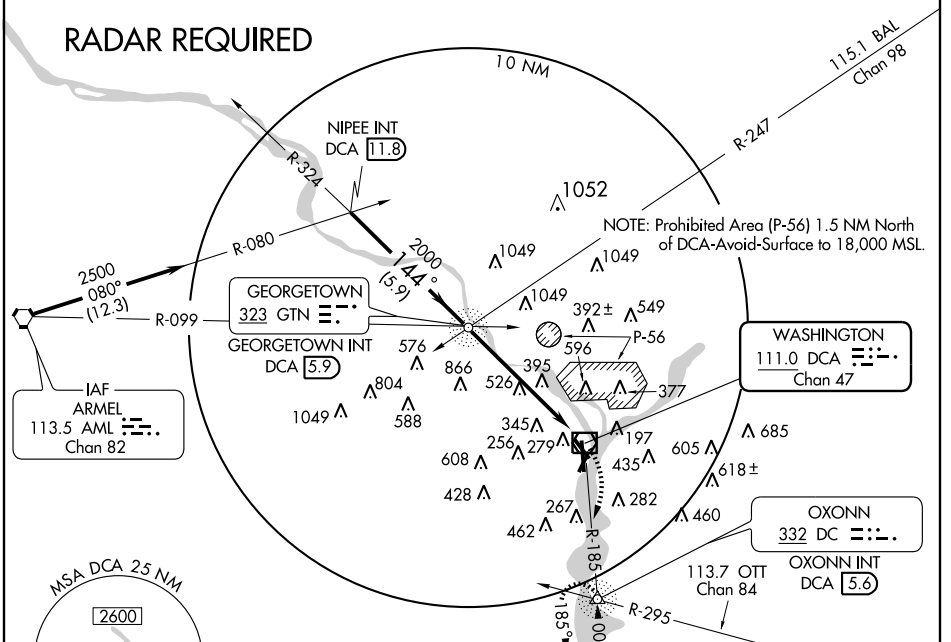
VOR/DME or GPS RWY 15

VOR/DME DCA 111.0 Chan 47	APP CRS 144°	Rwy Idg 5204 TDZE 16 Apt Elev 16
---	------------------------	---

WASHINGTON/RONALD REAGAN WASHINGTON NATIONAL (DCA)

⚠ Circling Cat C and D not authorized northeast of Rwy 15-33. **⚠** MISSED APPROACH: Climbing right turn to 1800 via DCA R-185 to OXONN NDB/Int/DCA 5.6 DME and hold.

ATIS 132.65	POTOMAC APP CON 124.7 338.2	WASHINGTON TOWER 119.1 257.6	GND CON 121.7	CLNC DEL 128.25
-----------------------	---------------------------------------	--	-------------------------	---------------------------



CATEGORY	A	B	C	D
S-15	920-1¼ 904 (1000-1¼)		920-2¾ 904 (1000-2¾)	920-3 904 (1000-3)
CIRCLING	920-1¼ 904 (1000-1¼)		920-2¾ 904 (1000-2¾)	920-3 904 (1000-3)

Knots	60	90	120	150	180
Min:Sec					

VOR/DME or GPS RWY 15

NE-3, 15 FEB 2007 to 15 MAR 2007

NE-3, 15 FEB 2007 to 15 MAR 2007